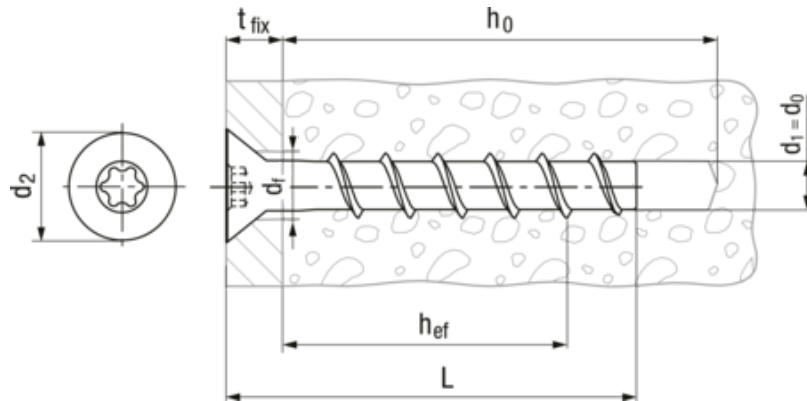


Mungo® MCS-SK

BN 21095 - Betonschrauben mit Senkkopf und Innensechsrund



Hersteller



Produktbezeichnung

• ETA-Zulassung Option 1 für gerissenen und ungerissenen Beton ($\geq 6 \times 50$)
 Produktinformationen, Zulassungen: www.mungo.swiss

Kopfform

Senk

Antrieb

Innensechsrund

Schaft

ohne Schaft

Marke

Mungo®

Produktlinie

MCS-SK

Werkstoff

Stahl

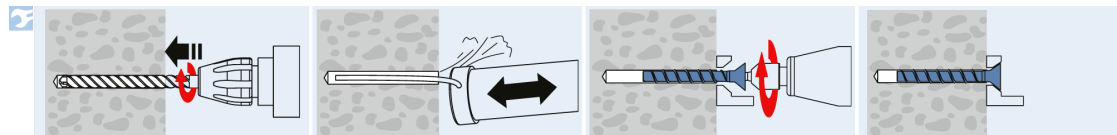
Oberfläche

verzinkt

Zertifikate



Illustration Montagehinweise



| Artikelnummer | d1 | L | d0 | df | SW | hef1 | hef2 | hef3 | h01 | h02 | h03 | d2 | t fix1 | t fix2 | t fix3 |
|---------------|----|-----|----|----|-----|------|------|------|-----|-----|-----|------|--------|--------|--------|
| 3796541 | 5 | 40 | 5 | 7 | T25 | 35 | - | - | 40 | - | - | 12 | 5 | - | - |
| 9006680 | 5 | 50 | 5 | 7 | T25 | 35 | - | - | 40 | - | - | 12 | 5 | - | - |
| 3796543 | 5 | 60 | 5 | 7 | T25 | 35 | - | - | 40 | - | - | 12 | 25 | - | - |
| 3796544 | 6 | 40 | 6 | 8 | T30 | 35 | - | - | 40 | - | - | 13 | 5 | - | - |
| 3796547 | 6 | 50 | 6 | 8 | T30 | 35 | 40 | - | 40 | 45 | - | 13 | 15 | 10 | - |
| 9006681 | 6 | 60 | 6 | 8 | T30 | 35 | 40 | 55 | 40 | 45 | 60 | 13 | 25 | 20 | 5 |
| 3796548 | 6 | 80 | 6 | 8 | T30 | 35 | 40 | 55 | 40 | 45 | 60 | 13 | 45 | 40 | 25 |
| 3796550 | 6 | 100 | 6 | 8 | T30 | 35 | 40 | 55 | 40 | 45 | 60 | 13 | 65 | 60 | 45 |
| 3796551 | 6 | 120 | 6 | 8 | T30 | 35 | 40 | 55 | 40 | 45 | 60 | 13 | 85 | 80 | 65 |
| 9006683 | 6 | 140 | 6 | 8 | T30 | 35 | 40 | 55 | 40 | 45 | 60 | 13 | 105 | 100 | 85 |
| 9006684 | 8 | 80 | 8 | 12 | T40 | 45 | 55 | 65 | 55 | 65 | 75 | 19.5 | 35 | 25 | 15 |
| 9006685 | 10 | 90 | 10 | 14 | T50 | 55 | 75 | 85 | 65 | 85 | 95 | 21.5 | 35 | 15 | 5 |